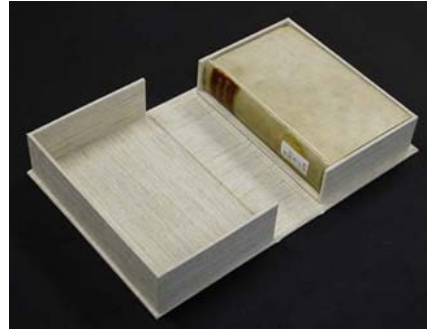


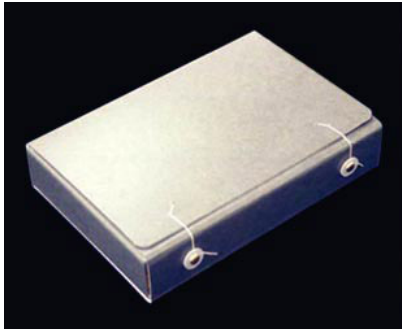
Picture Guide to Common Enclosures Made in Preservation



Corrugated clamshell (1/8" or 1/4" corrugated board)



Cloth-covered clamshell (cloth over binder's board)



Phase box, closed (60 pt. gray/white board)



Phase box, open



Portfolio (cloth cover over binder's board and a 20-pt. wrapper inside)



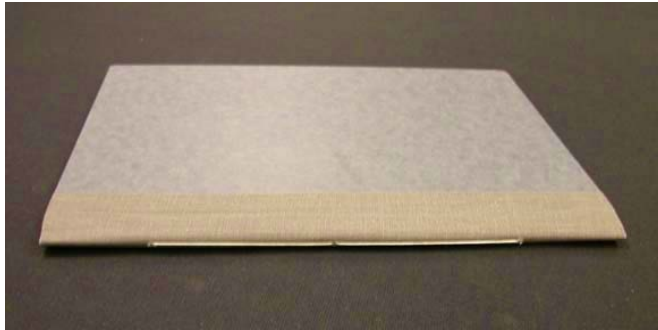
Kyle wrapper (60 pt. gray/white board, cloth spine, and 10 pt. 3-D pocket)



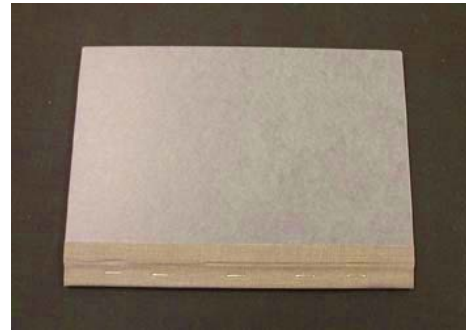
Tuxedo wrapper, closed - (20 pt. board) AKA 4-flap wrapper



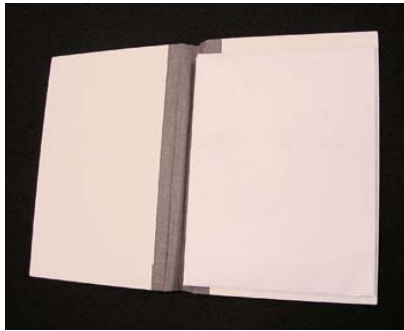
Tuxedo wrapper, open



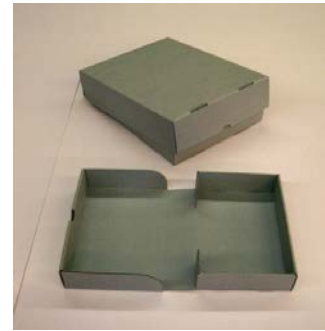
Sewn pamphlet binder – for thin, single signature items



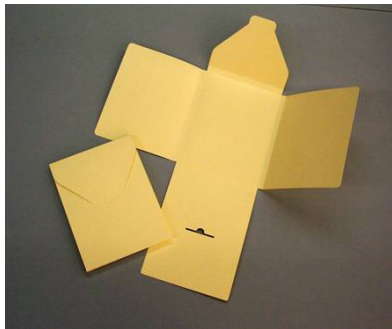
Stapled pamphlet binder – thin items w/o folds



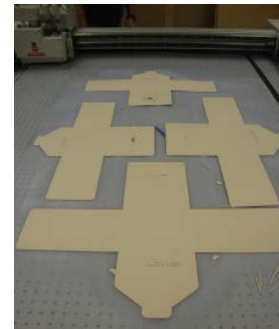
Pamphlet binder with pocket – for thin items that are delicate or do not have adequate margin for sewn or stapled pamphlet binding



Corrugated clamshell box (1/8 or 1/4 " made on the Kasemake automated box machine



4-flap wrappers (20 pt. board) made on the Kasemake automated box machine



4-flaps after cutting, creasing and printing on the Kasemake automated box machine

